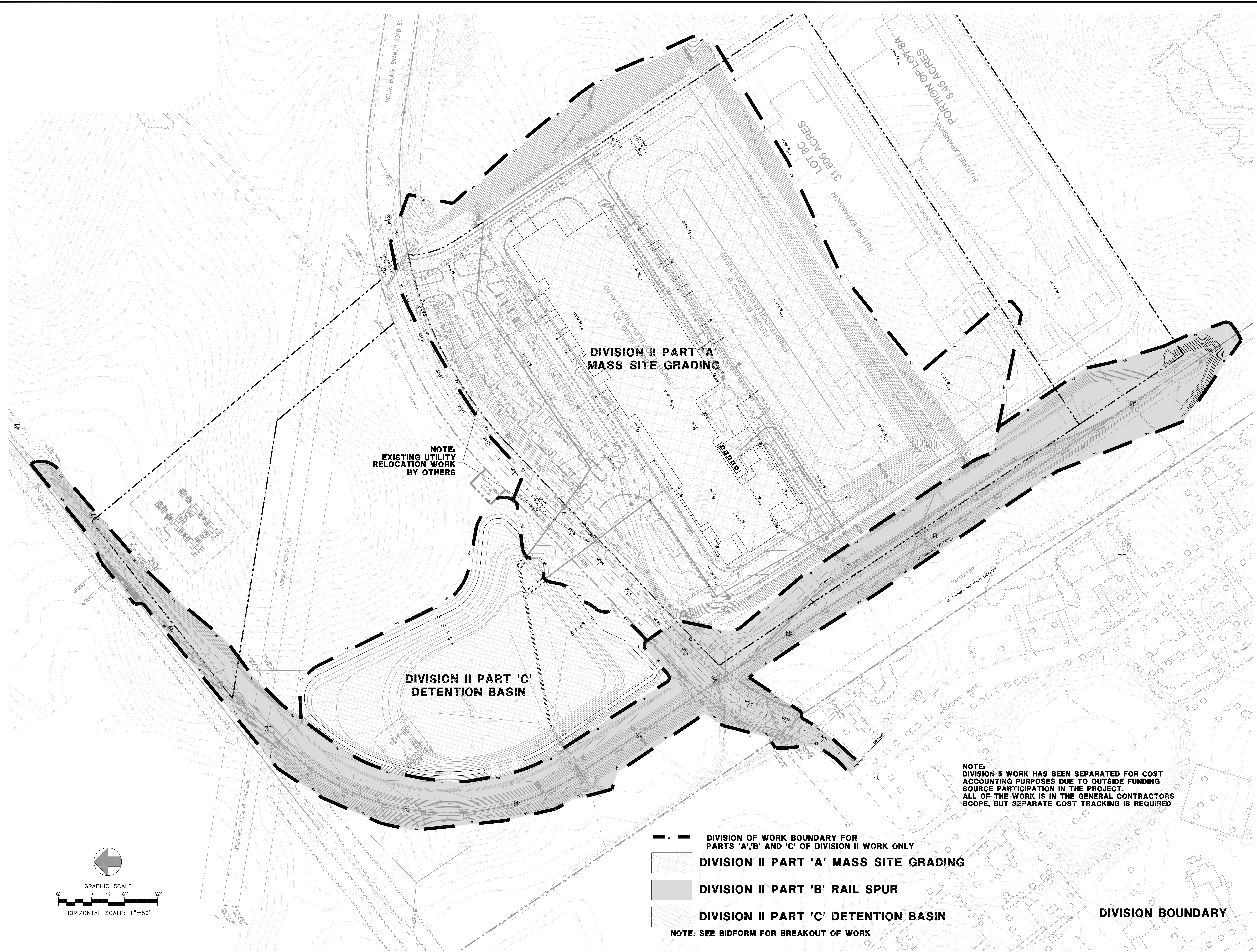


OCT 19 '13 2064-25 FLEX FILM - ELIZABETHTOWN TJ PATTERSON INDUSTRIAL PARK_C-010 DIVISION BOUNDARY.DWG







NOTE:
EXISTING UTILITY
RELOCATION WORK
BY OTHERS

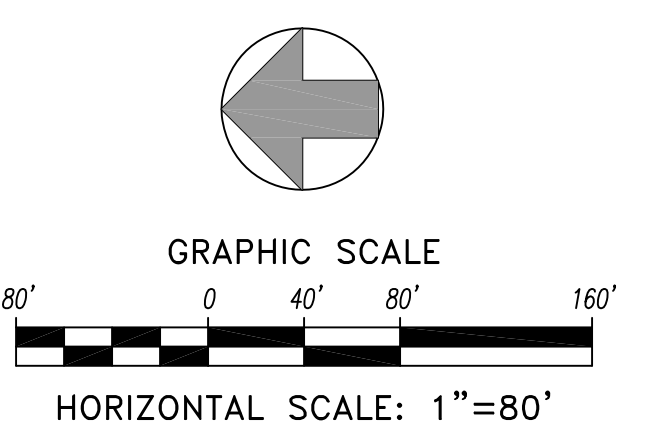
**DIVISION II PART 'A'
MASS SITE GRADING**

**DIVISION II PART 'C'
DETENTION BASIN**

NOTE:
DIVISION II WORK HAS BEEN SEPARATED FOR COST
ACCOUNTING PURPOSES DUE TO OUTSIDE FUNDING
SOURCE PARTICIPATION IN THE PROJECT.
ALL OF THE WORK IS IN THE GENERAL CONTRACTORS
SCOPE, BUT SEPARATE COST TRACKING IS REQUIRED

-  DIVISION OF WORK BOUNDARY FOR PARTS 'A','B' AND 'C' OF DIVISION II WORK ONLY
 -  DIVISION II PART 'A' MASS SITE GRADING
 -  DIVISION II PART 'B' RAIL SPUR
 -  DIVISION II PART 'C' DETENTION BASIN
- NOTE: SEE BIDFORM FOR BREAKOUT OF WORK

DIVISION BOUNDARY



DATE	REVISION	BY	AG.
10-2011	POST BID REVISIONS		

PROJECT NO. 2064-25	DESIGNED BY G.A.R.
	DRAWN BY J.R.M.
	CHECKED BY G.A.R.
	REVIEWED BY G.A.R.
DATE JUNE 2011	
SCALE AS SHOWN	

nsc
OF KENTUCKY, INC.
Engineers
Architects
Planners
624 Wellington Way
Lexington, KY 40503
www.nscinc.com
Phone: (859)223-5684
Fax: (859)223-2607

DRAWING NO.
UFL-L12
C-010

FLEX FILMS (U.S.A.) INC.
1221 NORTH BLACK BRANCH ROAD
ELIZABETHTOWN, KENTUCKY 42702
PROJECT L-12 BOPET U.S.A.

